

ActiveSecurity MyClient

Setup Guide

Contents

1	Introduction	2
2	Installation of ActiveSecurity MyClient	2
2.1	Desktop installation.....	2
3	Configuration.....	6
3.1	Language	6
3.2	Smart card management.....	6
3.2.1	Registry settings	6
3.2.2	Starting	7
3.2.3	Smart card initialization	8



1 Introduction

This guide describes step by step the installation and configuration of ActiveSecurity MyClient. It does not include the setup of hardware and Windows Server or Workstation installation. The document assumes that the reader has basic knowledge of Windows environment and application installations. To be able to install the software you have to have permissions to install new software (administrator permissions are required).

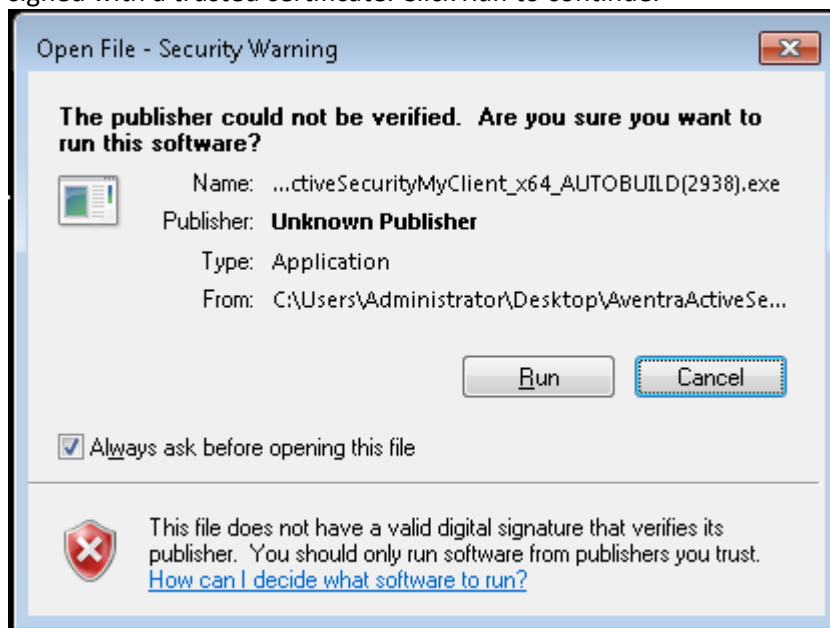
2 Installation of ActiveSecurity MyClient

The MyClient middleware connects the tokens to Windows XP Vista, and 7 environments. It supports a wide range of card and PIN management functions, including the optional Gridsure™ authentication technology. The middleware includes Crypto Service Provider (CSP) for Microsoft™ CryptAPI and PKCS#11 Token Interface. The CSP is called **Fujitsu mPollux DigiSign Client**. Use this when using Web Enrol for acquiring certificates to your smart cards.

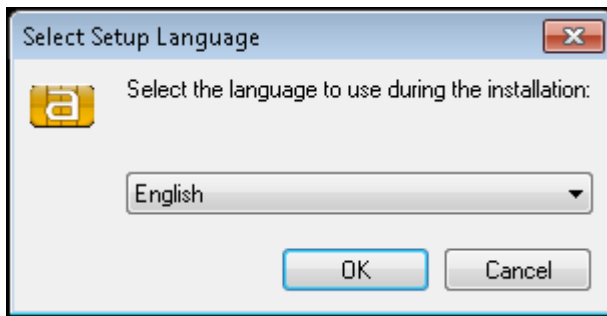
2.1 Desktop installation

Installation procedure

- ➔ Installation is done from a Microsoft Installer package. Double click the .msi file or select it and press enter. First you will see a warning screen, because the installation package has not been signed with a trusted certificate. Click *Run* to continue.



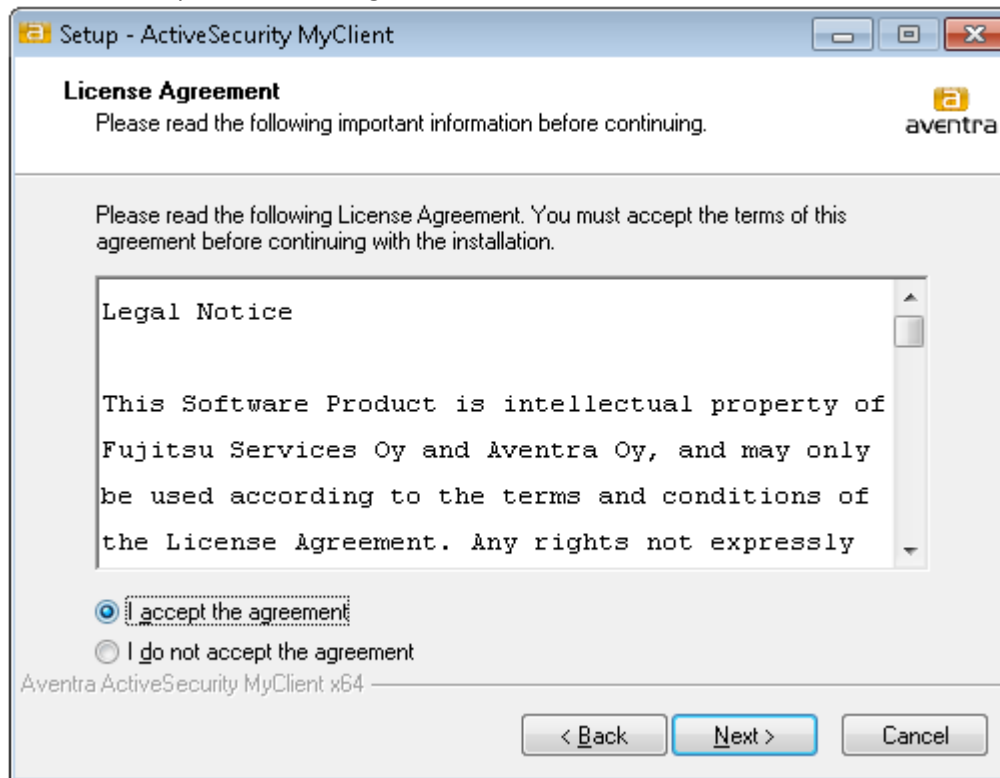
- After that select the language you would like to use during installation. Options are: English, Suomi (Finnish) and Svenska (Swedish). Click *OK* to continue.



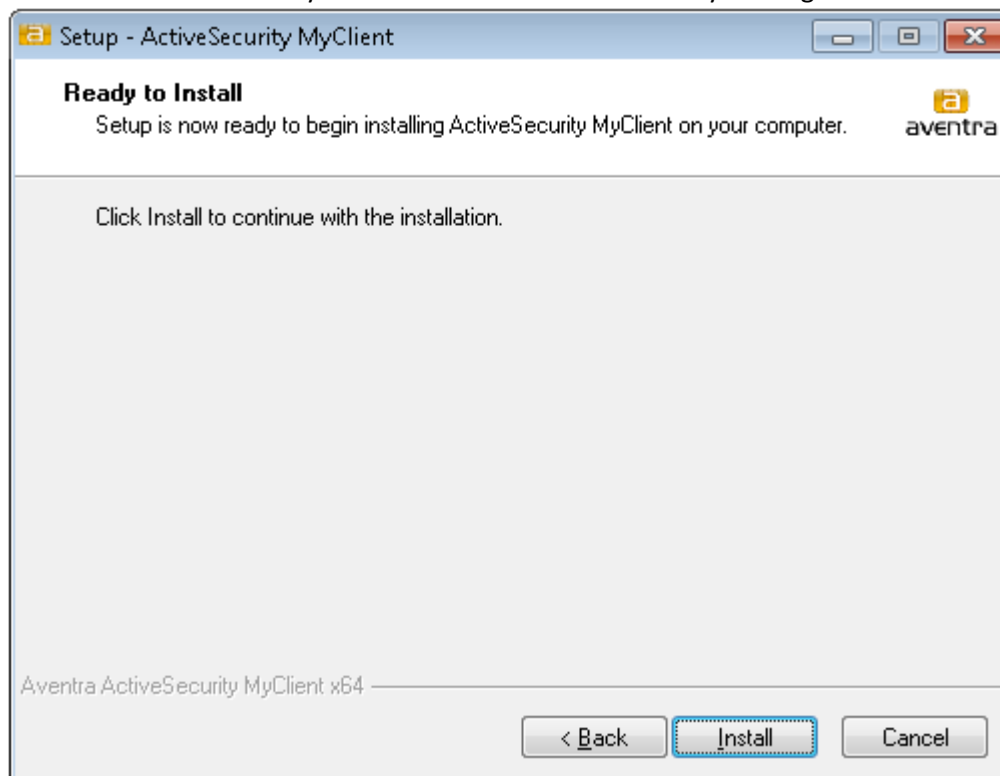
- After this you will see the welcome screen in the language you selected in the previous step. Click *Next* to continue.



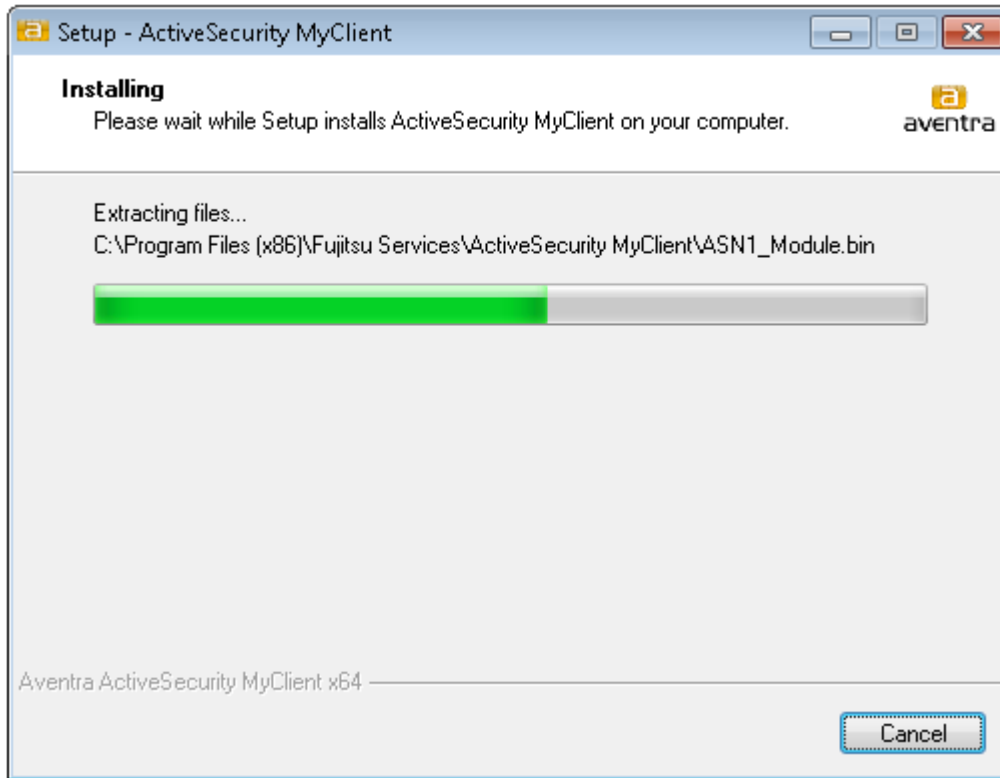
→ Read and accept the Licence Agreement and click *Next*.



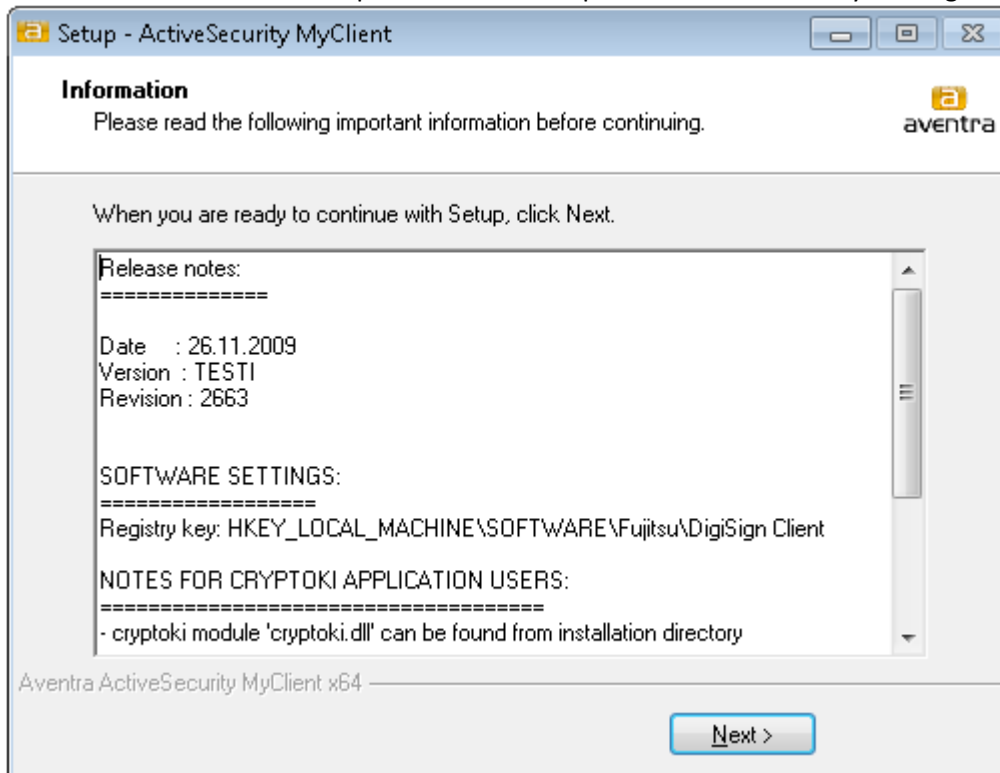
→ Now the software is ready to install. Start the installation by clicking *Install*.



- Wait for the installation to finish. When the installation is complete a message is displayed of the result. Complete the installation by clicking “Close”.



- Wait for the installation to unpack the files. Complete the installation by clicking “Next”.



→ Finish the installation by clicking “Finish”. Now the MyClient is installed and ready to use.



3 Configuration

The MyClient can be configured by editing settings in the registry. The settings are located in

```
HKEY_LOCAL_MACHINE\SOFTWARE\Fujitsu\DigiSign Client
```

On 64-bit systems are some of the settings located in the 32-bit section:

```
HKEY_LOCAL_MACHINE\SOFTWARE\Wow6432Node\Fujitsu\DigiSign Client
```

3.1 Language

The MyClient uses the Windows region setting to define the used UI language. Supported languages are English, Finnish and Swedish. If you set the region to e.g. Sweden, then the MyClient UI will be in Swedish, for Finland Finnish and so on. For regions with a default language that is not supported MyClient will use English as default.

3.2 Smart card management

This feature allows you to initialize empty cards with the basic PKCS#15 structure. You can also import a PKCS#12 (certificate container) file to the card.

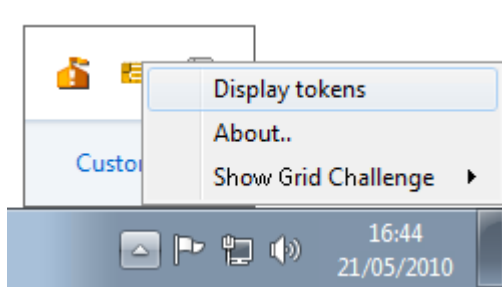
3.2.1 Registry settings

To enable this feature you need to add the following value to the registry location shown in section 3. In 64-bit systems the setting is added to the secondary location for 32-bit applications. After the setting is set, log off and log in again for the changes to take effect.

Value name: UserLevel
Value: 1 (on), 0 (off)

3.2.2 Starting

Once the configuration is done you can use the feature by starting the MyClient token window from the system tray. The registry setting will activate a new *Card Management* tab to the MyClient token window.

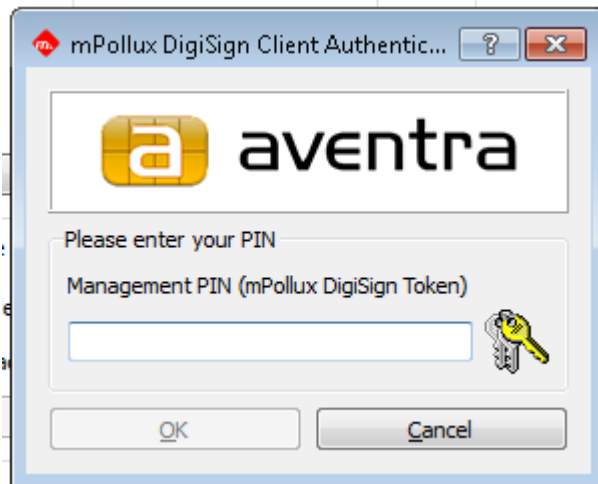


3.2.3 Smart card initialization

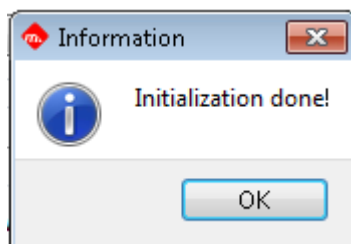
The initialization is done in a few simple steps.

- ➔ The smart card inserted to the reader is detected automatically. If you have several readers with an inserted smart card, then select the correct reader to perform the initialization on.
- ➔ Select the Initialization script. For most cases the Dynamic is suitable.
- ➔ By default MyClient suggest random PIN and PUK codes. Change these if desired or store them for later use.
- ➔ Enter the SO PIN and SO PUK.
- ➔ Click the *Initialize card* button.

MyClient asks for the PIN to allow the operation to be performed on the card.



After the initialization MyClient shows the result of the operation.



Now you have a fully functional PKCS#15 card without any content. To be able to use the card for authentication you need appropriate certificates etc. For more information on this, contact Aventura or refer to the *PKI Administrators Guide*.

© Copyright Aventura Ltd, 2010. All rights reserved. The contents of this document are subject to copyright. Any changes, modifications, additions or amendments require prior written consent from Aventura Ltd. Reproduction in any form is only permitted on the condition that the copyright notice remains on the actual document. Publication or translation in any form requires prior written consent from Aventura Ltd. Trademarks are the property of their respective owners.